

# Ideology & Policy

## 4.8 & 4.10



Which of the following is **NOT** a core value of United States political culture?

- a) Rule of law
- b) Individualism
- c) Equality of outcome
- d) Equality of opportunity





October 26/27, 2023

[B5](#), [B6](#), [S5](#), [S6](#)



Learning Intention	Success Criteria	You will need	Chromebook Peardeck
I am learning about how political ideologies shape policy debates and choices in American policies	I can explain how U.S. political culture (e.g., values, attitudes, and beliefs) influences the formation, goals, and implementation of public policy over time.	Agenda	PO & policy
		Homework	HW: Watch DV 4.9 and read 393-399



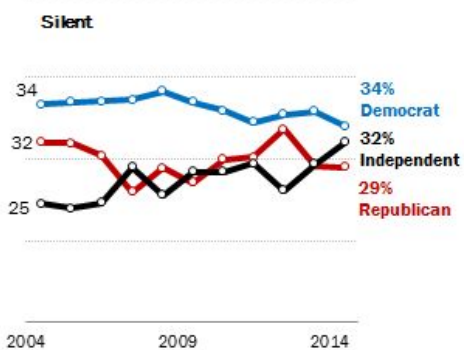
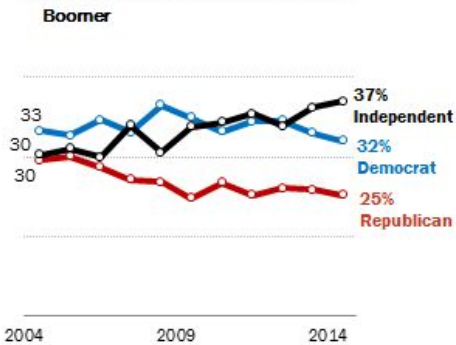
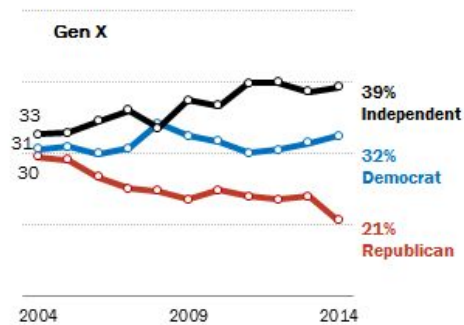
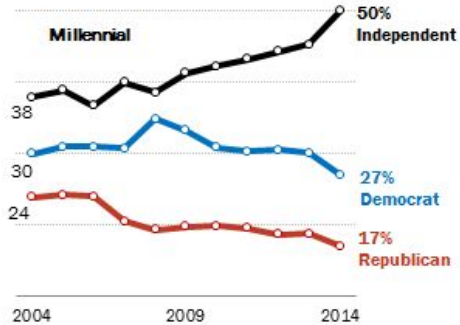
## Learning Intention

- I am learning about how political ideologies shape policy debates and choices in American policies.

## Success Criteria

- I can explain how U.S. political culture (e.g., values, attitudes, and beliefs) influences the formation, goals, and implementation of public policy over time.
- I can explain how policy trends concerning the level of government involvement in social issues reflect the success of conservative or liberal perspectives in political parties.

## Recent Trends in Party Identification, by Generation

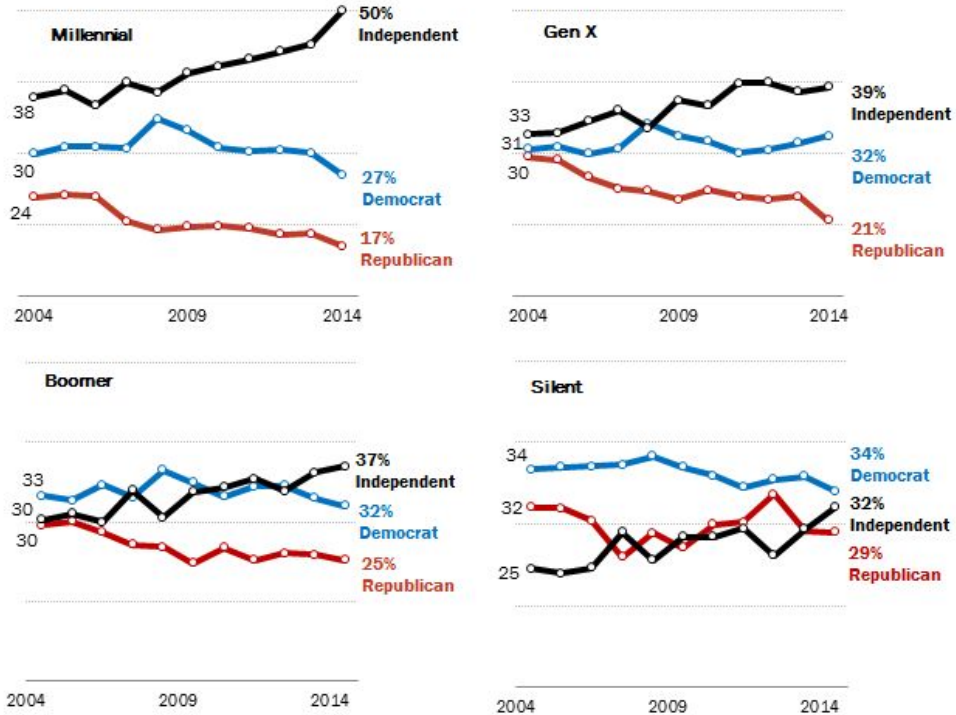


Source: Data points represent totals based on all Pew Research surveys of the general public conducted in that calendar year  
PEW RESEARCH CENTER

Use the graphs and your knowledge of U.S. Government and Politics to answer parts A, B and C.

- Identify what the graphs measure.
- Describe one difference in party identification by generation.
- Explain how a candidate for public office might respond to this information.

## Recent Trends in Party Identification, by Generation



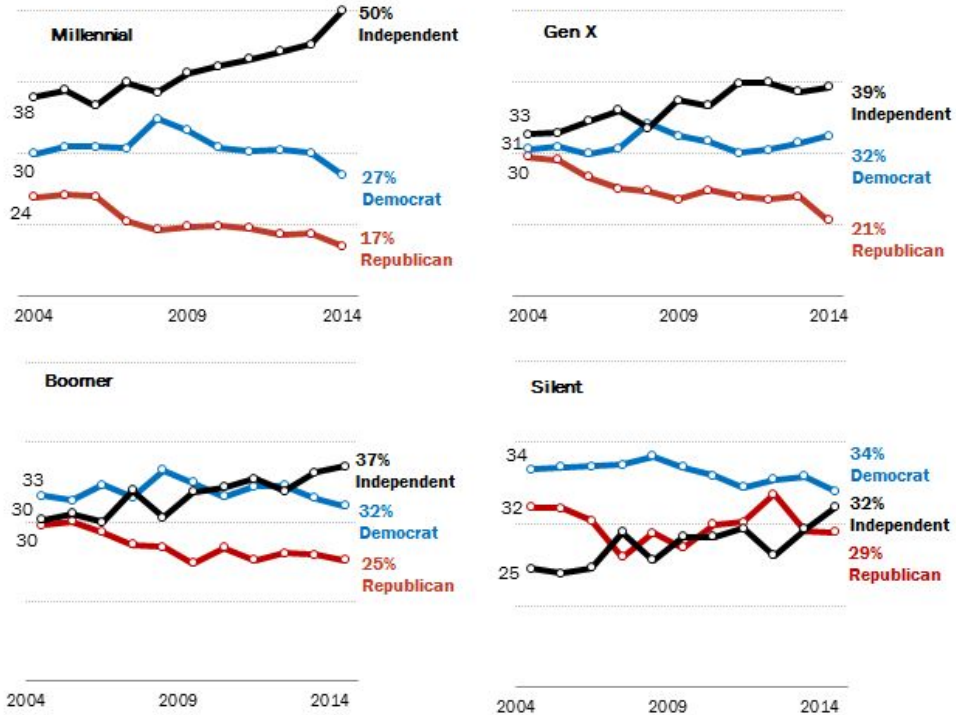
Source: Data points represent totals based on all Pew Research surveys of the general public conducted in that calendar year

PEW RESEARCH CENTER

A. Identify what the graphs measure.

Students, write your response!

## Recent Trends in Party Identification, by Generation



Source: Data points represent totals based on all Pew Research surveys of the general public conducted in that calendar year

PEW RESEARCH CENTER

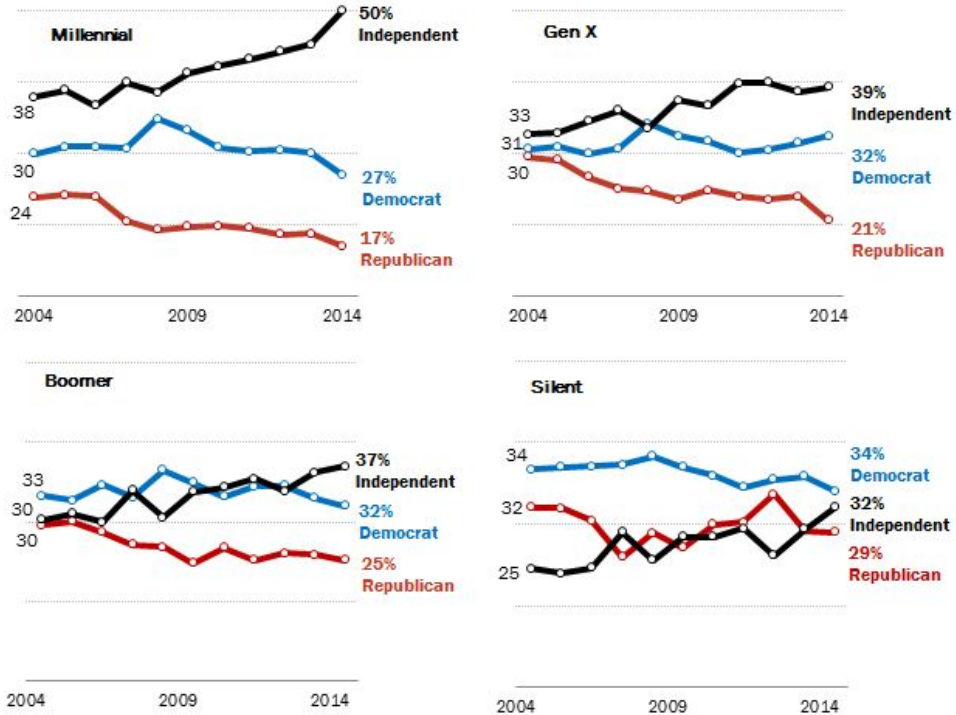
B. Describe one difference in party identification by generation.

Students, write your response!

Pear Deck Interactive Slide

Do not remove this bar

## Recent Trends in Party Identification, by Generation



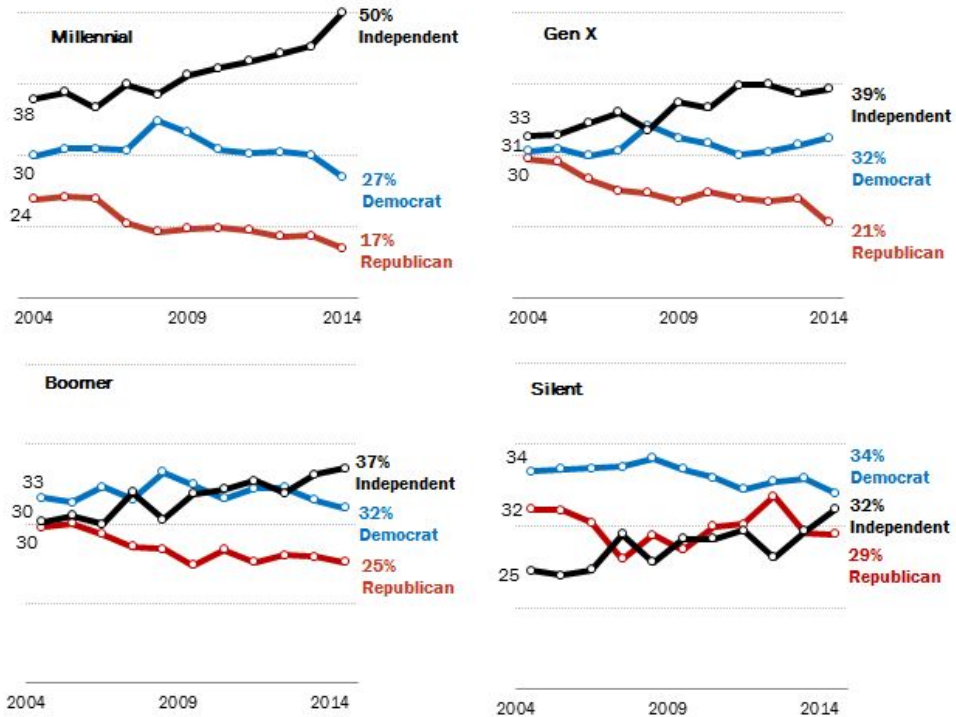
Source: Data points represent totals based on all Pew Research surveys of the general public conducted in that calendar year  
PEW RESEARCH CENTER

C. Explain how a candidate for public office might respond to this information.

Students, write your response!



## Recent Trends in Party Identification, by Generation



Source: Data points represent totals based on all Pew Research surveys of the general public conducted in that calendar year

PEW RESEARCH CENTER

Based on the data in the chart, which statement is most accurate?

- A. Independents tend to lean towards the views of the Democratic Party.
- B. Older American voters stay within their political parties for life.
- C. Younger Americans are less likely to claim a political party.
- D. Individuals do not identify with a political party until election year.

Students choose an option

Pear Deck Interactive Slide  
Do not remove this bar



# Which of the following is an accurate comparison of liberalism and conservatism views concerning social policy?

	LIBERAL	CONSERVATIVE
(A)	The federal government should provide more funding for public schools	The federal government should have a stronger role in shaping education
(B)	The federal government should not conduct background checks for gun purchases	Licensed gun owners should be permitted to openly carry firearms in public
(C)	Job promotion should be based on skills and experience, not race or gender	Racial and gender considerations should be taken into account to promote diversity in workplace hiring decisions
(D)	The government should be responsible for helping to improve the economic position of low income people	Individuals should not rely on government aid for their economic well-being



Students choose an option

The most valuable method for understanding demographic changes in America is the

- a) public opinion poll.
- b) census.
- c) turnout in presidential elections.
- d) Internal Revenue Service statistical tax abstracts.



# Police shooting of African American teens...

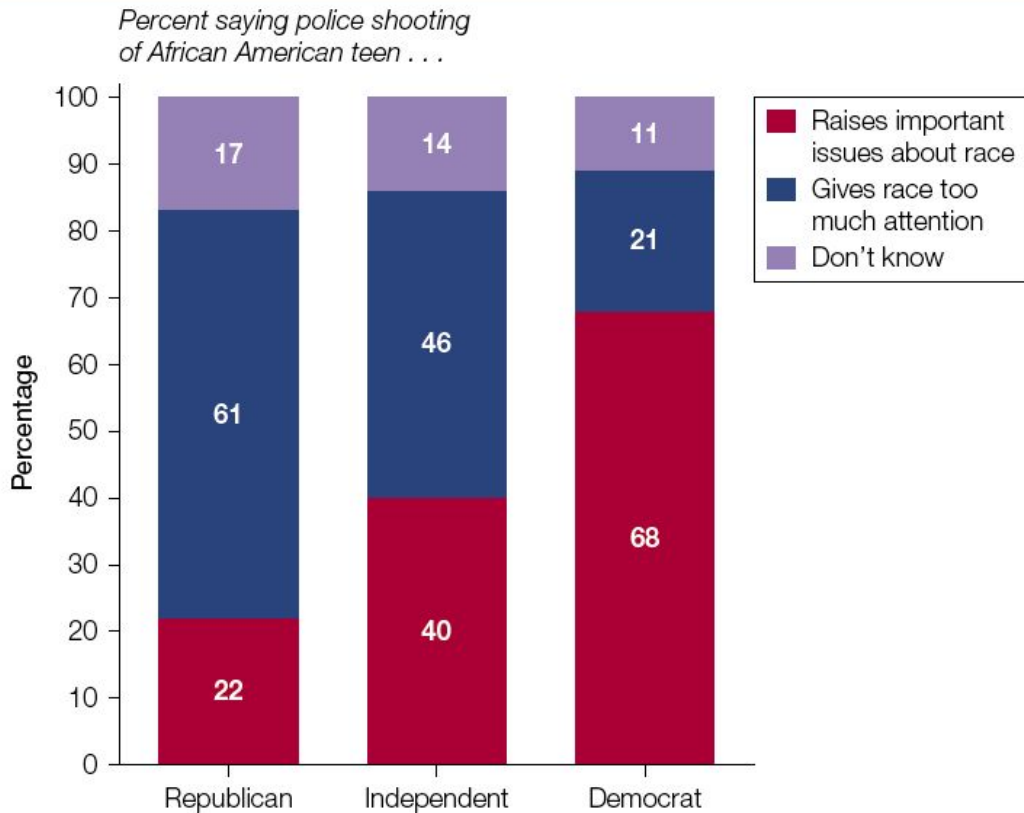
- A) Raises important issues about race
- B) Gives race too much attention
- C) Don't know



Students choose an option

**FIGURE 11.3**

## Partisan Divisions in Public Opinion about Ferguson



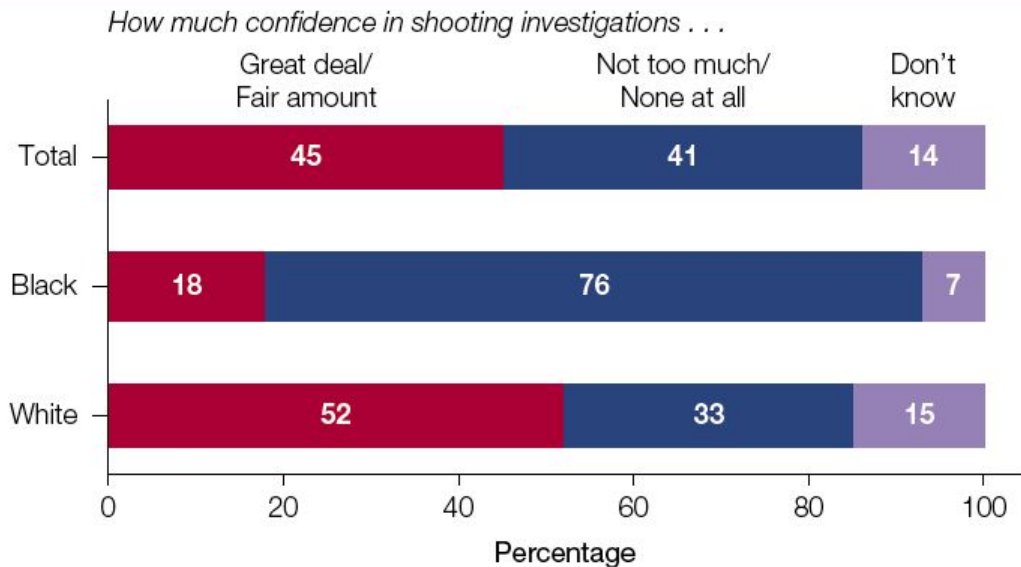
Data from Pew Research Center

# Public Opinion and Policy Making

- In the early 1990s the public supported welfare reform
  - Result – *Personal Responsibility and Work Opportunity Act*
- Only 3 in 10 Americans supported the *Tax Cuts and Jobs Act*, but it was passed by Congress in the fall of 2017
  - Politically motivated by a Republican Congress, Republican president, interest groups and donors who wanted the results of the 2016 election manifested into policy

**FIGURE 11.5**

## Racial Divisions in Opinions of Authorities' Handling of the Ferguson Investigation



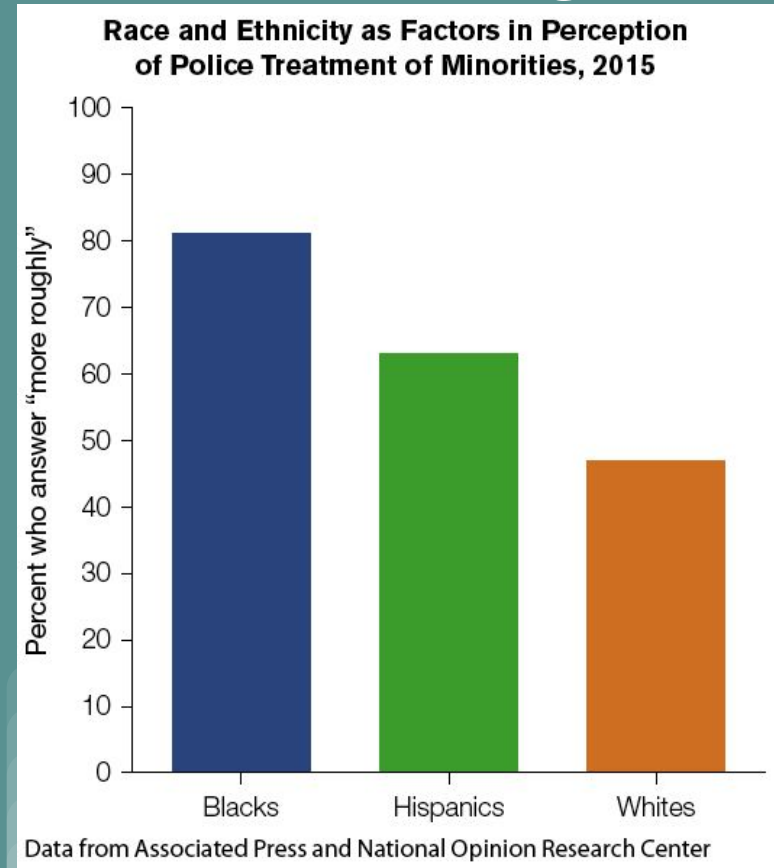
Note: Survey conducted August 14–17, 2014. Whites and blacks include only those who are not Hispanic. Figures may not add to 100% because of rounding.

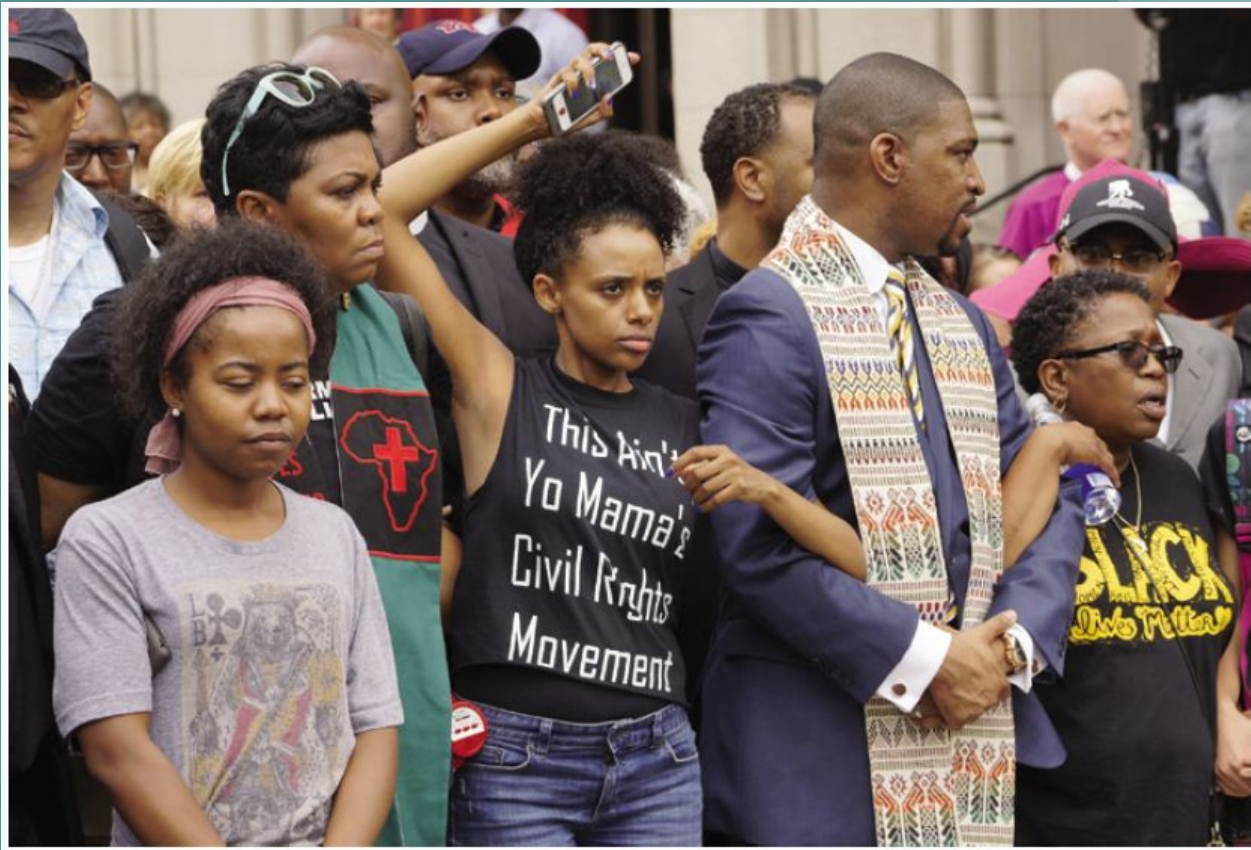
Data from Pew Research Center



# Public Opinion and the Response to Ferguson

- As more protests emerged in Ferguson in 2015, the police's approach changed
- Public opinion had shifted police tactics used in an attempt to change negative opinion



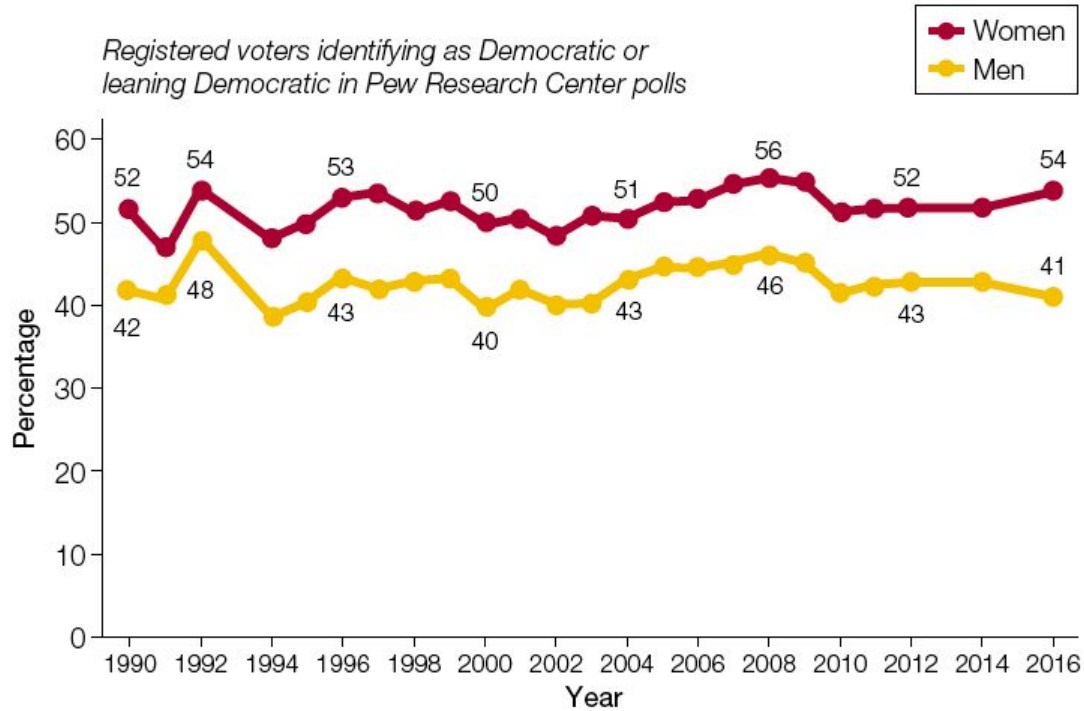


Protestors prepared to march in downtown St. Louis on August 10, 2015, to mark the one-year anniversary of Michael Brown's death. The police response to the march was markedly different from previous protests and was much more measured and low key.

Rick Wilking/Reuters/Newscom

**FIGURE 11.4**

## The Gender Gap in American Politics



Data from Pew Research Center



How does this video  
connect to topics discussed  
in class?



Students, write your response!

Which of the following policies would an individual who identifies as a Democrat most likely support?

- a) Reducing regulations on Wall Street to stimulate economic growth
- b) Decreasing the role of the federal government to ensure access to health care
- c) Increasing federal enforcement of immigration laws
- d) Strengthening anti-discrimination policies for married gay couples



Which of the following statements about voting behavior in national elections is most accurate?

- a) Blue-collar workers are more likely to vote than are professionals.
- b) Men are more likely to vote than are women
- c) Democrats are more likely to vote than are Republicans.
- d) Senior citizens are more likely to vote than are college students



What should be the top priority for the president and Congress?

- A) Budget deficit
- B) Economy
- C) Health Care
- D) Jobs
- E) Terrorism



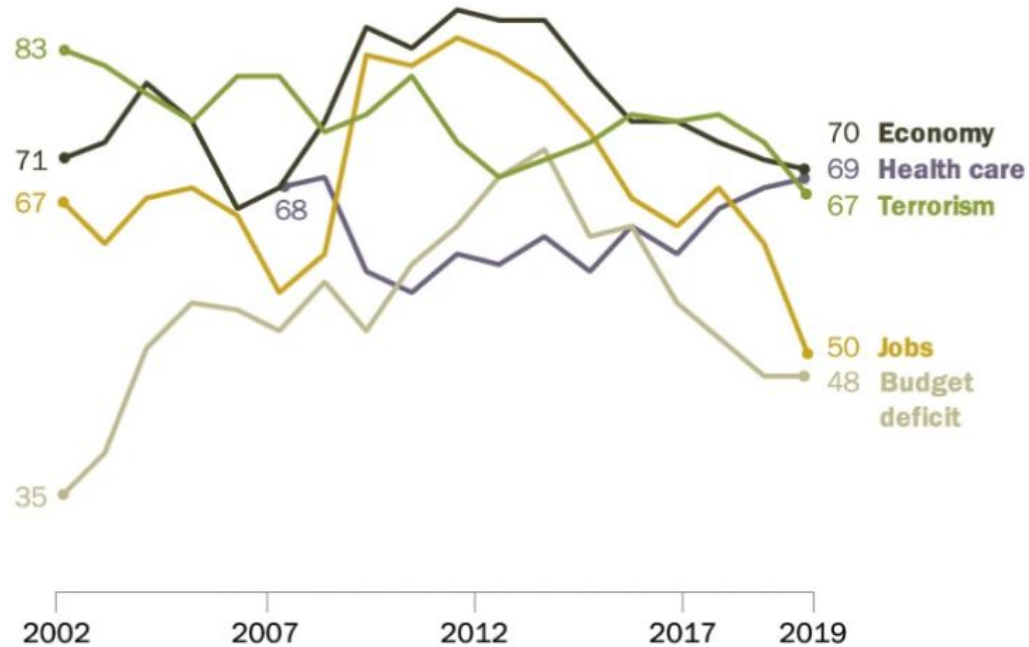
Students choose an option

Pear Deck Interactive Slide  
Do not remove this bar



## Economy, health care and terrorism among top public priorities, as concerns over jobs and deficit fade

*% who say \_\_\_\_ should be a top priority for the president and Congress*

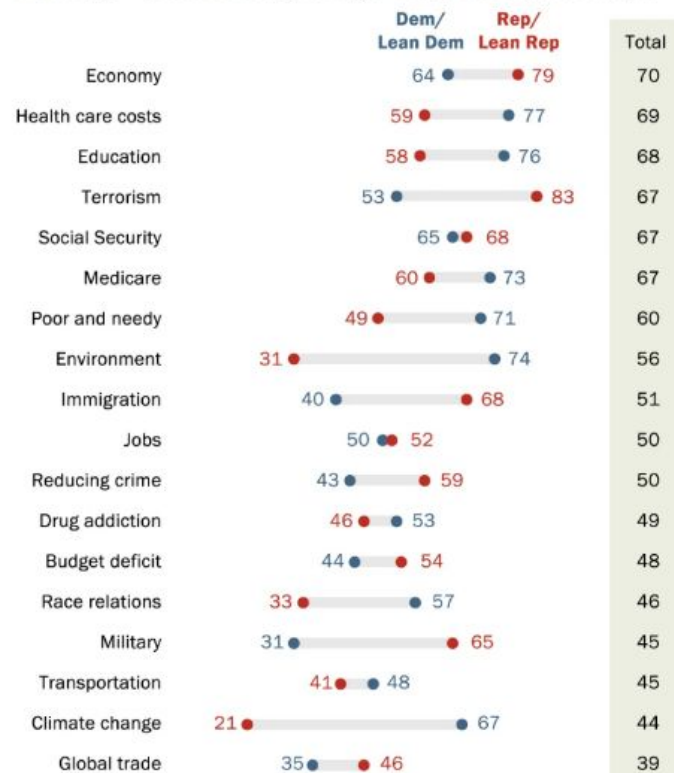


Source: Survey of U.S. adults conducted Jan. 9-14, 2019.

PEW RESEARCH CENTER

## Partisans far apart on the importance of many issues, including the environment and strengthening military

% who say \_\_\_ should be a top priority for Trump and Congress this year



Source: Survey of U.S. adults conducted Jan. 9-14, 2019.

PEW RESEARCH CENTER

# Who shares your views on race?



BY AMANDA BARROSO AND JULIANA MENASCE HOROWITZ



GETTY IMAGES

**We asked 6,637 U.S. adults** about their views on current race relations, racial inequality and the tense history that led us here. We found that Americans are divided along racial lines in their views on the legacy of slavery, the best way to achieve diversity and the value they place on their own racial and ethnic identity.

Let's look at 11 questions from our survey to see what you think and how that compares with the rest of the nation.

# Exit Polls: How Voting Blocs Have Shifted From the '80s to Now

By K.K. REBECCA LAI and ALLISON MCCANN NOV. 7, 2018

Democrats won the House as voters across nearly all demographic groups moved to the left, especially women and young people, according to exit polls.

**White women swung left, but House Democrats failed to win the group outright.**



Students, write your response!



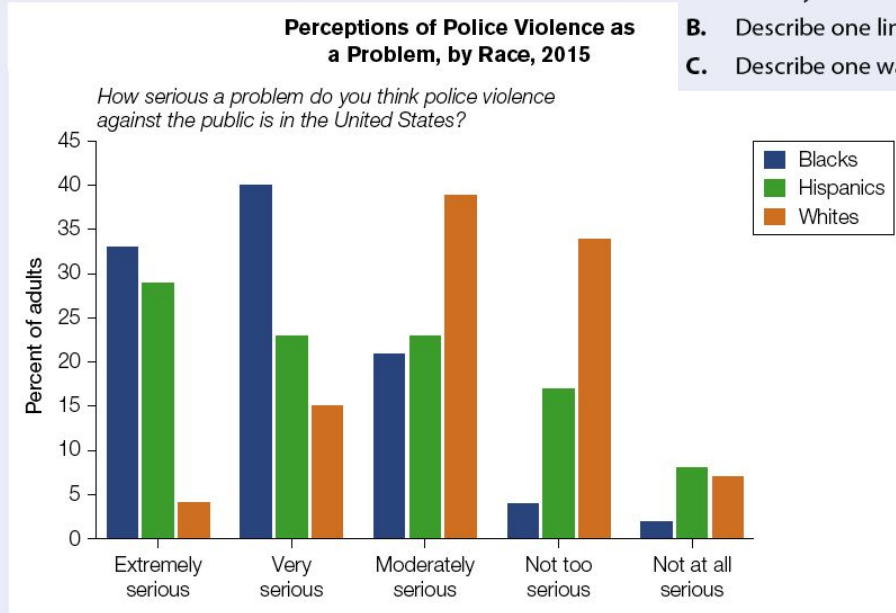
# Section 11.3

## Review Question: Free Response

### 11.3 Review Question: Free Response

Use the bar charts and your knowledge of U.S. Government and Politics to answer parts A, B, and C.

- A. Identify one trend shown in the bar charts.
- B. Describe one limitation of the data shown in the bar charts in measuring public opinion.
- C. Describe one way in which public opinion may shape the policymaking agenda.

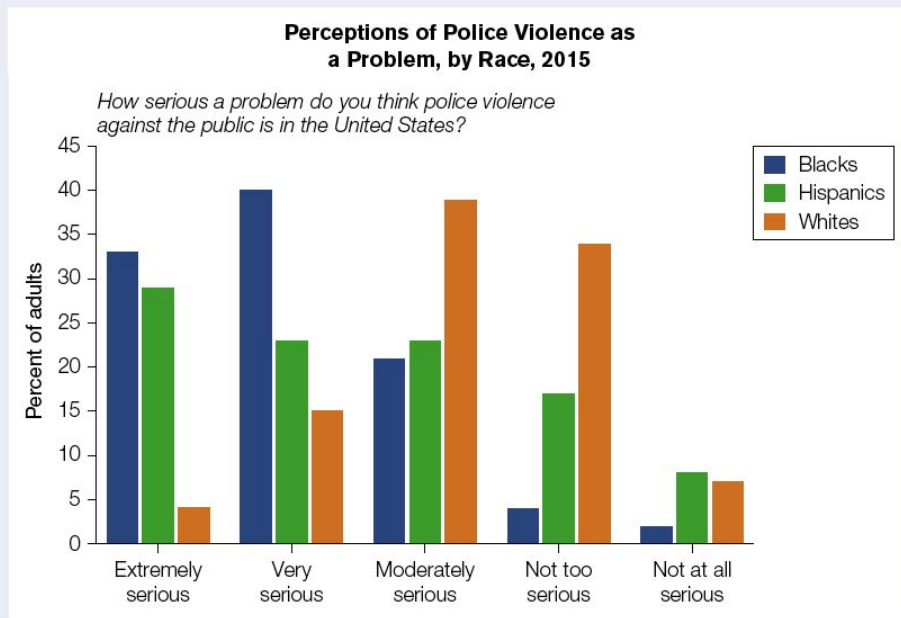


Data from Associated Press and National Opinion Research Center



# A) Identify one trend shown in the bar charts

## 11.3 Review Question: Free Response



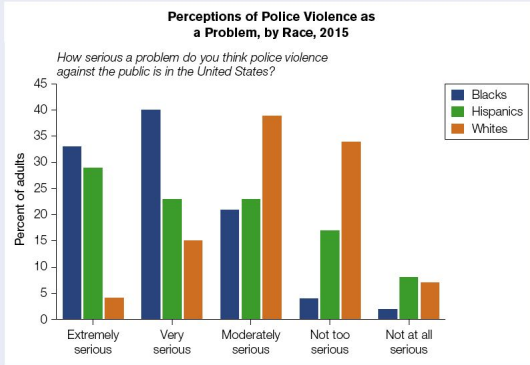
Data from Associated Press and National Opinion Research Center

Students, write your response!



# A) Identify one trend shown in the bar charts

## 11.3 Review Question: Free Response



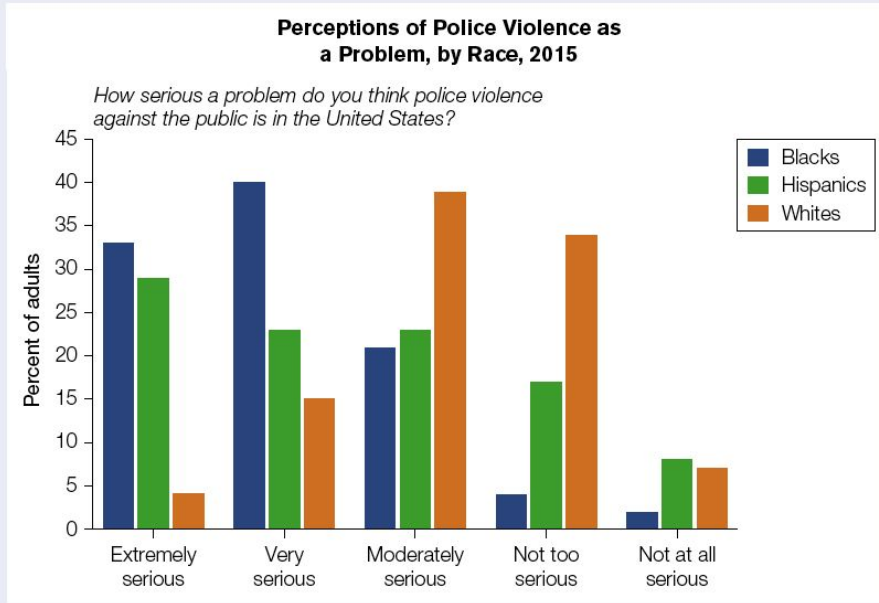
Data from Associated Press and National Opinion Research Center

Student to identify one trend on the chart, which could be either that whites are far less likely than minority groups to believe that police violence is an extremely or a very serious issue, or that blacks are the most likely group to believe that police violence is an extremely or a very serious issue, or that Hispanics had the largest percentage of any group sampled who believed that police violence is not at all a serious issue. Credit for part A requires the student to compare at least two different demographic groups.



# B) Describe one limitation of the data shown in the bar charts in measuring public opinion

## 11.3 Review Question: Free Response



Data from Associated Press and National Opinion Research Center



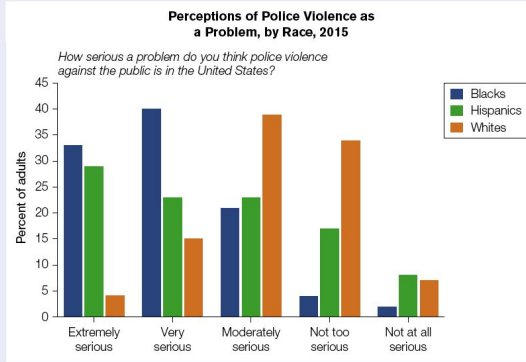
Students, write your response!





# B) Describe one limitation of the data shown in the bar charts in measuring public opinion

## 11.3 Review Question: Free Response



Data from Associated Press and National Opinion Research Center

Student must describe one limitation in measuring public opinion from the data shown in the bar charts. A) discern adj “extremely,” “very,” “moderately,” “not too differ. B) Q worded in a way to suggest violence is a problem. C) No info mentioned on sample size, how poll conducted

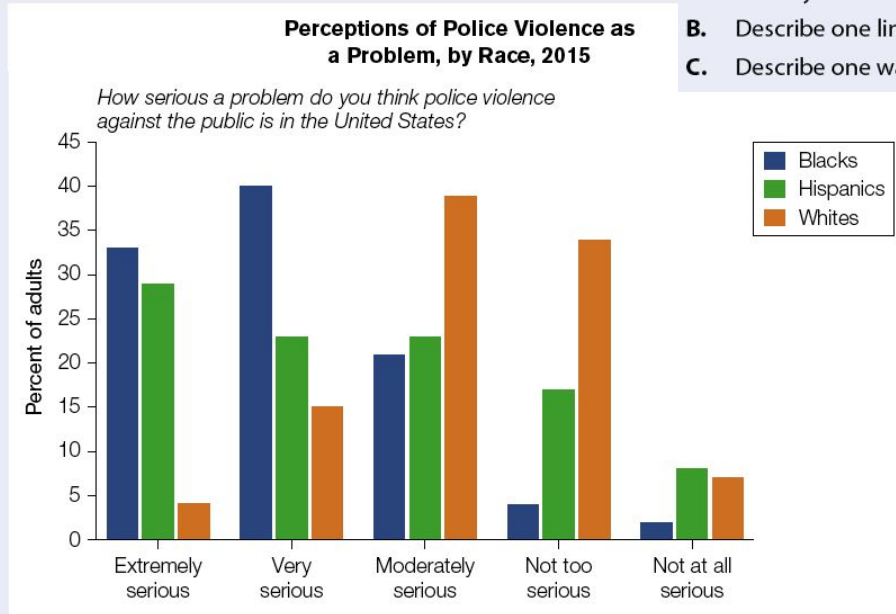


# C) Describe one way in which public opinion may shape the policymaking agenda

## 11.3 Review Question: Free Response

Use the bar charts and your knowledge of U.S. Government and Politics to answer parts A, B, and C.

- A. Identify one trend shown in the bar charts.
- B. Describe one limitation of the data shown in the bar charts in measuring public opinion.
- C. Describe one way in which public opinion may shape the policymaking agenda.



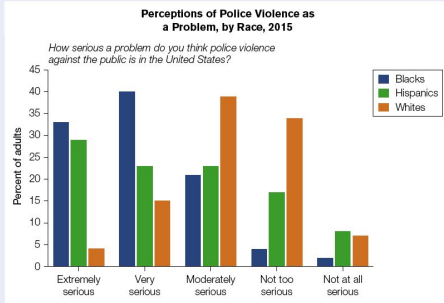
Data from Associated Press and National Opinion Research Center

Students, write your response!



# C) Describe one way in which public opinion may shape the policymaking agenda

## 11.3 Review Question: Free Response



Data from Associated Press and National Opinion Research Center

How PO may shape policymaking, which could incl informing POTUS, Cong, Admin agencies what public thinks to adopt policies

- Political Pumpkins due Monday or Tuesday am!
- HW: Watch DV 4.9 and read 393-399
- Unit 2 Exam Nov 3

